

# Project Update

## Pagewood and Matraville Masterplan St Agnes' Catholic Primary School

April 2022

**Welcome to the April edition of the Pagewood and Matraville Masterplan project update. As term 1 comes to an end, we reflect on construction progress achieved and highlight activities you can expect to see within the school grounds during term 2.**

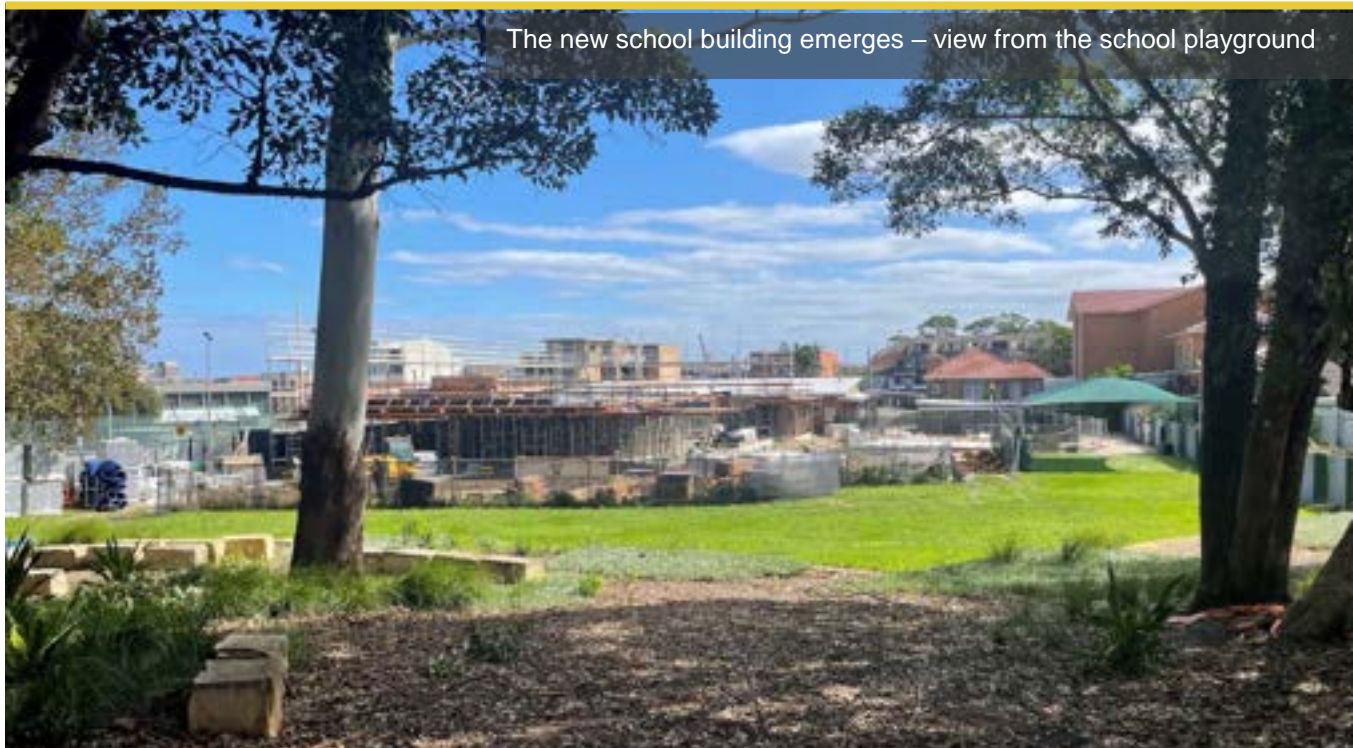
### Stage 1 works update

Despite heavy rain and challenging weather conditions experienced over recent weeks, Steve-Watt Construction is making great progress on the new two-storey school building. The concrete pours for the ground and first floors are complete. Preparation for these pours included installing steel reinforcement and electrical and service conduits. Concrete blockwork has also begun, with walls for the ground floor emerging rapidly.

### Term 2

Work will continue during the two week school holidays, with significant progress expected. Next term, students, staff and parents will see the façade of the new building start to emerge and come to life. This has commenced with the installation of steelwork. From a safety perspective, fencing will remain in place to separate construction activities from everyday school operations.

This building will contain twelve flexible learning spaces for students, breakout areas, student amenities and a canteen. We are excited to see the new building take shape. Below are some photographs of the recent construction progress.

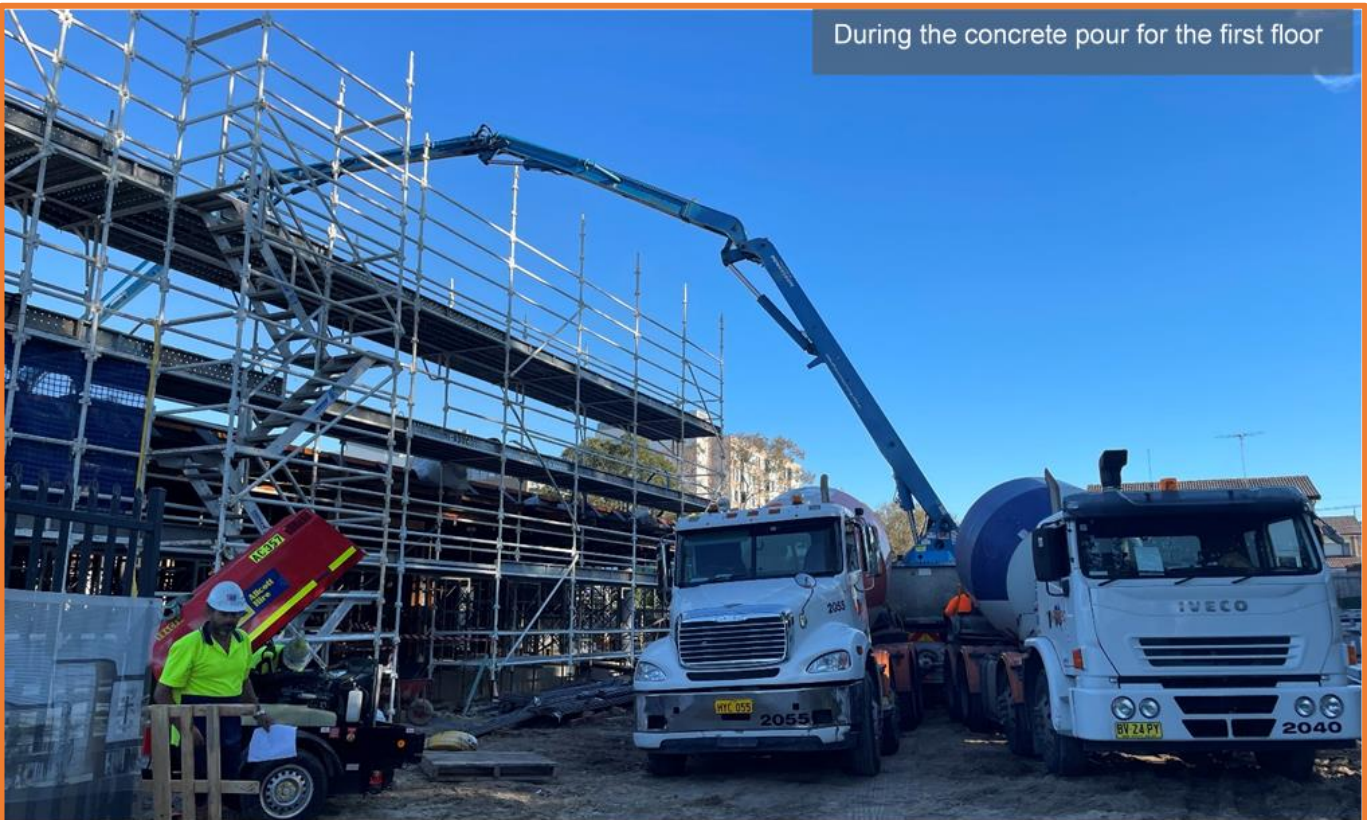


The new school building emerges – view from the school playground

The view from the first floor with steel reinforcement installed



During the concrete pour for the first floor



**We wish our staff, students and families a safe and happy Easter. We look forward to providing more information and updates in Term 2.**

This update has been brought to you by Rosemary Andre, Principal, in conjunction with the Pagewood Matraville Masterplan project team.

## CONTACT

**Email:** [pmmenquiries@syd.catholic.edu.au](mailto:pmmenquiries@syd.catholic.edu.au)  
**Website:** <https://pmm.ceosyd.catholic.edu.au/>